

An aerial view of a city waterfront, likely Savannah, Georgia. The image shows a large body of water in the foreground, a bridge crossing the water, and a city skyline in the background with various buildings and a church steeple. The text is overlaid on this background.

Regulatory Endoscopy Survey Preparation: Panel Discussion

Christa Allen BSN

Dianna Amick RN, BSN, CGRN, CPHQ

Cathy Bauer RN, BSN, MSN, MBA, CGRN

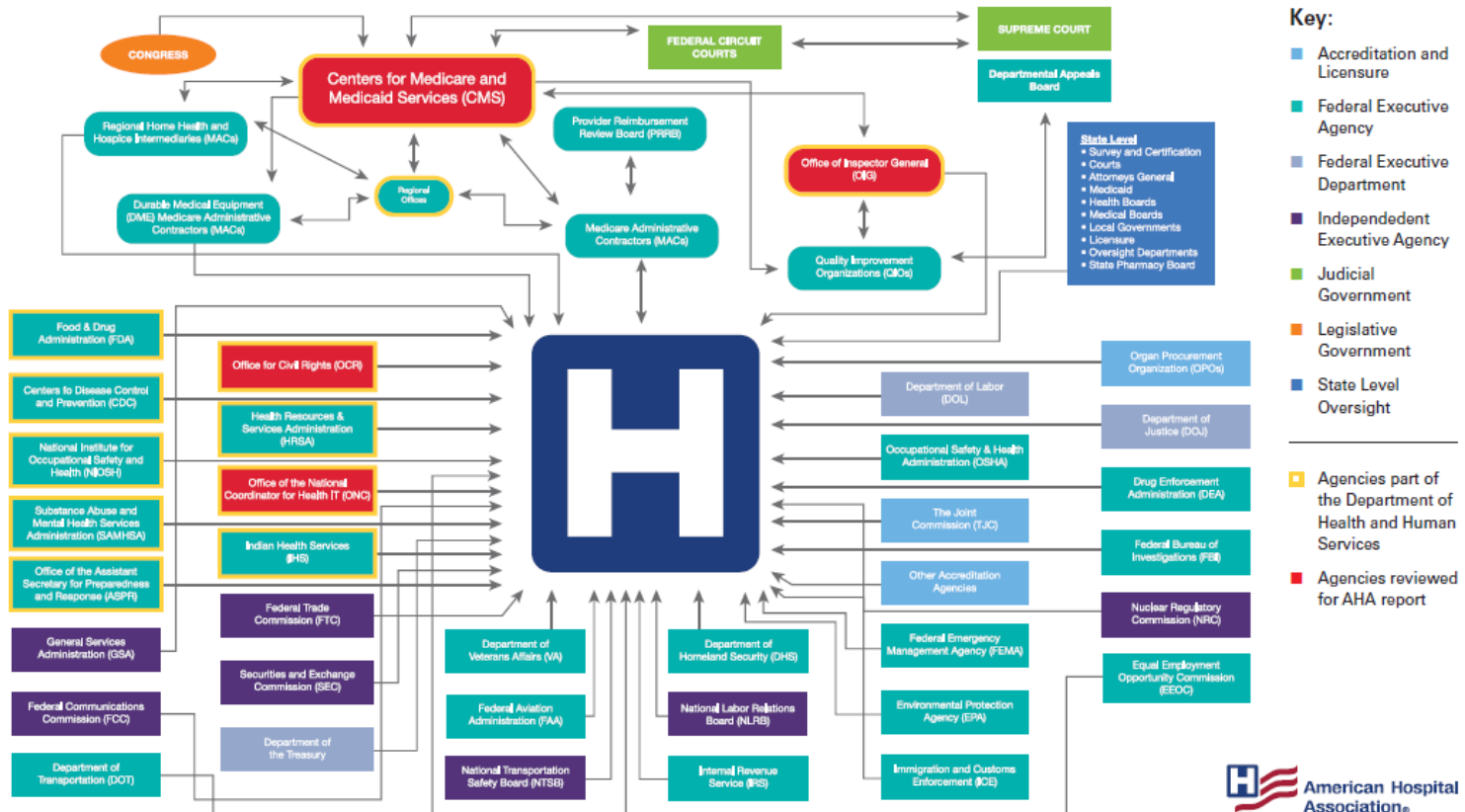
Laura White RN, BSN, MSN, CGRN

Objectives

- **List the different agencies that perform regulatory surveys in the GI Lab**
- **List the key components of all regulatory surveys**
- **List the ways to stay survey ready**

Federal Agencies with Regulatory or Oversight Authority Impacting Hospitals

Four federal agencies account for 629 regulatory requirements that health systems, hospitals and post-acute care providers must comply with, yet providers are subject to regulation and oversight from many other sources.



Society Guidelines Compilation



AER



Drying



Education



Manual
Cleaning



Physical
Separation



Record
Keeping



Storage



Traceability



Transport

Regulatory Agencies

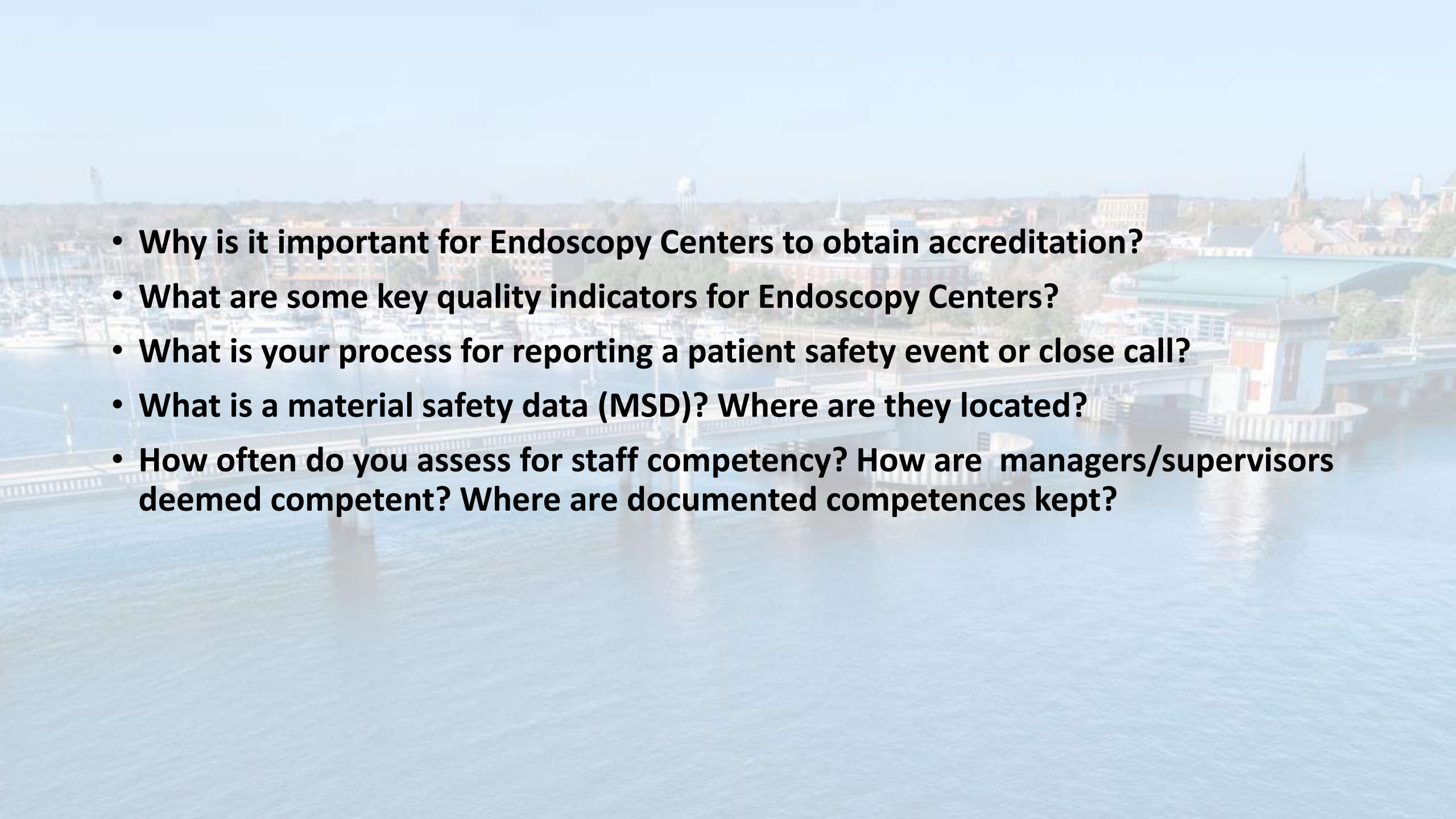
- **The Joint Commission**
- **Accreditation Association for Ambulatory Health Care**
- **Centers for Medicare & Medicaid Services**
- **Centers for Disease Control**

Pre-survey Preparation

- **What are your recommendations for preparing for an accreditation survey?**
- **What are your recommendations for continuous readiness in between surveys?**

Day of Survey

- **What should the facility expect the day of the accreditation survey?**
- **What will surveyors ask me?**
- **Surveyor asks to see the instructions for use for the sterilizer, the endoscope, or HLD.**
- **Do you know your unit Emergency Management Plan?**
- **How do you know the medical equipment you are using is safe to use?**
- **Surveyor asks to see the documentation logs for HLD and/or sterilization.**
- **What should I do if I don't know the answer to a question the surveyor asks?**

- 
- An aerial view of a waterfront city, likely Savannah, Georgia, showing a large body of water in the foreground, a bridge, and various buildings and structures in the background under a clear sky.
- **Why is it important for Endoscopy Centers to obtain accreditation?**
 - **What are some key quality indicators for Endoscopy Centers?**
 - **What is your process for reporting a patient safety event or close call?**
 - **What is a material safety data (MSD)? Where are they located?**
 - **How often do you assess for staff competency? How are managers/supervisors deemed competent? Where are documented competences kept?**

Questions for the Panel

