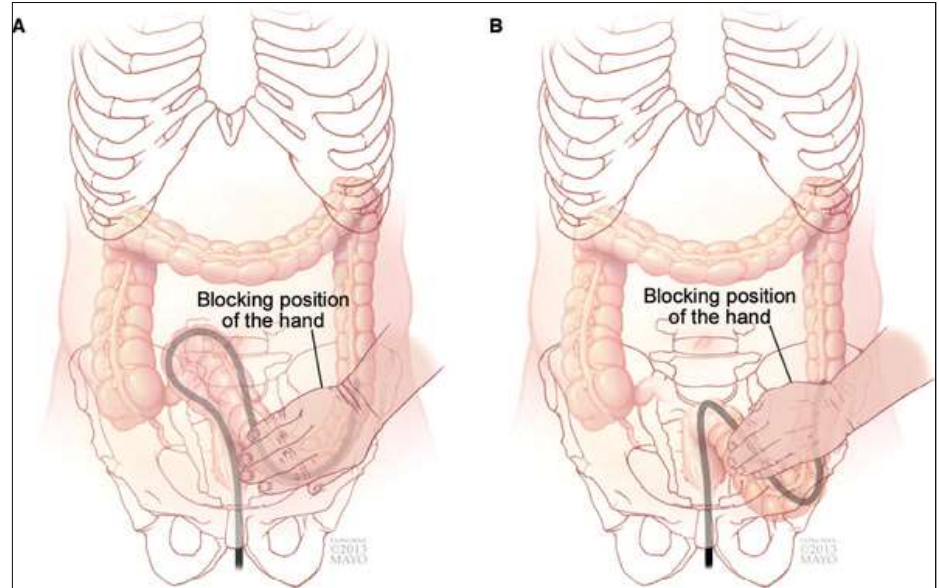


## Sigmoid Looping

(A) Right hand blocking the "N" loop

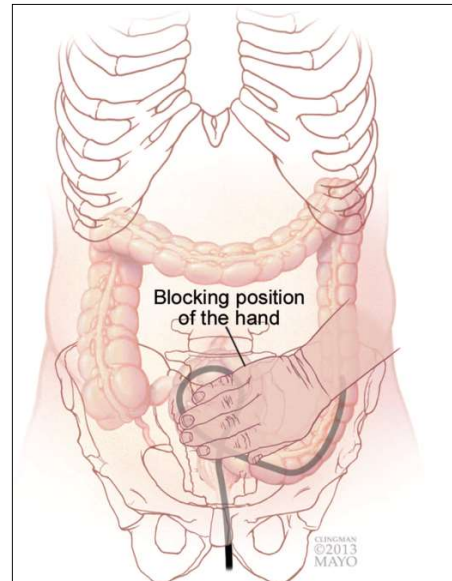
(B) Left hand blocking the sigmoid loop dipping into the pelvic region



(Preschel, et al., 2015)

## Sigmoid Looping

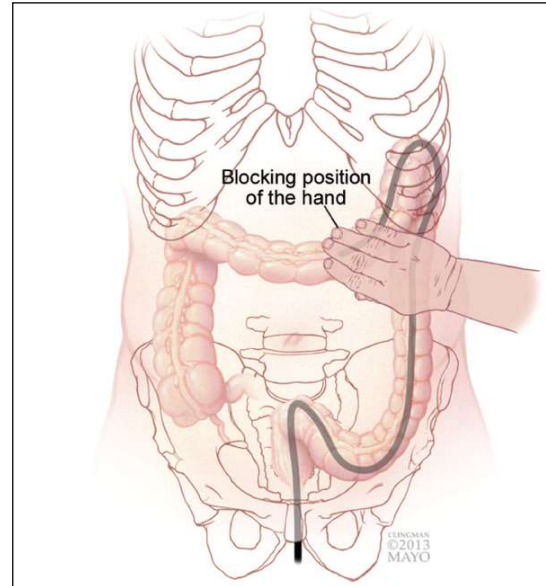
**Blocking Position**  
Right hand over the sigmoid  
blocking alpha loop from reforming.



(Preschel, et al., 2015)

## Splenic Flexure Looping

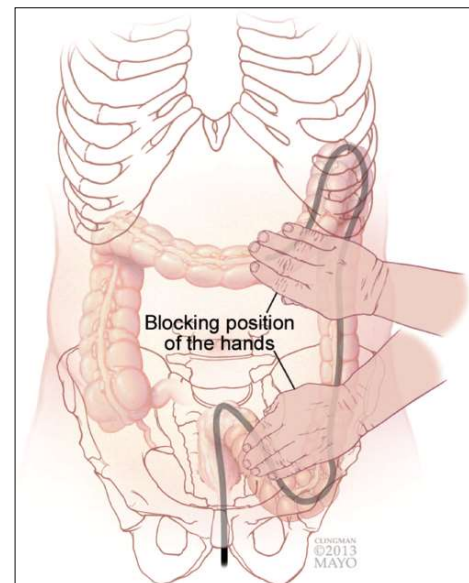
Right hand blocking and protecting the spleen



(Preschel, et al., 2015)

## Sigmoid and Splenic Flexure Looping

Left hand blocking the sigmoid loop. Right hand blocking and protecting the spleen

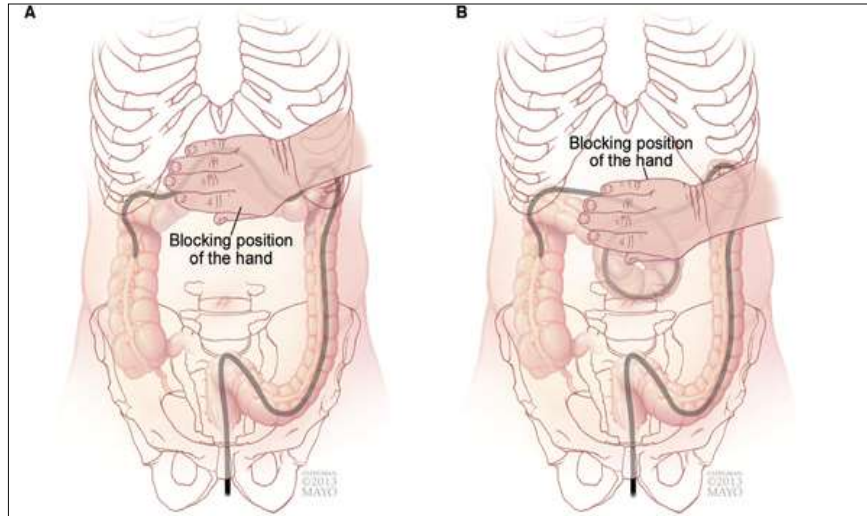


(Preschel, et al., 2015)

## Transverse Colon Looping

A) Right hand blocking the scope from going into the diaphragm

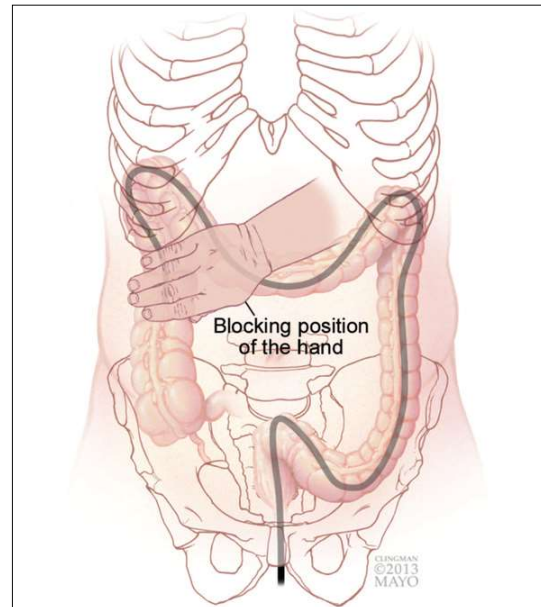
B) Right hand blocking the loop from entering the pelvic region.



(Preschel, et al., 2015)

## Hepatic Flexure

Right hand blocking and protecting the hepatic flexure



(Preschel, et al., 2015)